

About

ISSN 2310-6697

toiser—open transactions on independent scientific-engineering research

FUNKTECHNIKPLUS # JOURNAL

Théorie—Expérimentation—Métrologie—Logiciel—Applications

ISSUE 5 – TUESDAY 30 SEPTEMBER 2014 – YEAR 2

1 Contents

2 About

3 Editorial Board – Technical Support

4 Information for Peers – Guiding Principles

Electrical Engineering – Expérimentation

7 Electrical Machine Insulation: Traditional Insulating Materials, Nanocomposite Polymers and the Question of Electrical Trees

M.G. Danikas, R. Sarathi

Telecommunications Engineering – Logiciel

33 Antenna Radiation Patterns: RadPat4W – FLOSS for MS Windows or Wine Linux

N.I. Yannopoulou, P.E. Zimourtopoulos



About

This European Journal defends
honesty in science and ethics in engineering

Publisher – **otoiser** open transactions on independent scientific-engineering research – **ARG NP UoP** Antennas Research Group Non Profit Union of Persons – Hauptstraße 52, 2831 Scheiblingkirchen, Austria – **www.otoiser.org** – **www.antennas.gr**

Language – We declare the origins of the Journal by using English, German and French, as well as, a Hellenic vignette, in the cover page. However, since we recognize the dominance of USA English in technical literature, we adopted it as the Journal's language, although it is not our native language.

Focus – We consider Radio-FUNK, which still creates a vivid impression of the untouchable, and its Technology-TECHNIK, from an Advanced-PLUS point of view. That is, we dynamically focus at any scientific-engineering discipline producing FUNKTECHNIKPLUS Théorie, Expérimentation, Métrologie, Logiciel, ou Applications.

Scope – We emphasize this scope broadness by extending the title of the Journal with a Doppelkreuz-Zeichen #, which we use as a placeholder for the disciplines of Editorial Board:

Electrical – # Electronics – # Computer – # Telecommunications – Engineering # Computer Science # Applied Mathematics, etc.

Frequency – We regularly publish 3 issues per year on January, May, and September as well as an issue every 3 papers.

Editions – We follow the arXiv.org system, that is the 1st edition date of every issue is on the cover page and any update date is on the odd pages with its version on all pages.

Format – We use the uncommon for Journals A5 paper size and the much readable Liberation Mono fixed-space font, with hyphenation, justification, and unfixed word spacing, to display 2 pages side-by-side on widescreen monitors with WYSIWYG printout. We can consider only papers in ODF odt or MS doc format written in LibreOffice or MS Office with MathType. We use PDFCreator and PDF-Xchange to produce pdf and export to images for printing on demand and electronic publishing.

License – We use the free Open Journal System OJS from the PKP Public Knowledge Project for internet publication.

Copyright – Creative Commons Attribution 3 Unported CC-BY 3

Please download the latest *About* edition from
about.ftpj.otoiser.org

Editorial Board

Electrical Engineering

High Voltage Engineering # Insulating Materials

Professor Michael Danikas

EECE, Democritus University of Thrace, mdanikas@ee.duth.gr

Electrical Machines and Drives # Renewable Energies

Electric Vehicles

Assistant Professor Athanasios Karlis

EECE, Democritus University of Thrace, akarlis@ee.duth.gr

Computer Engineering # Software Engineering

Cyber Security

Associate Professor Vasileios Katos

EECE, Democritus University of Thrace, vkatos@ee.duth.gr

Internet Engineering # Computer Science

Simulation # Applied Education # Learning Management Systems

Lecturer Sotirios Kontogiannis

BA, TE Institute of Western Macedonia, skontog@gmail.com

Hypercomputation # Fuzzy Computation # Digital Typography

Dr. Apostolos Syropoulos, Xanthi, Greece

BSc-Physics, MSc-, PhD-Comp. Science, asyropoulos@yahoo.com

Applied Mathematics # Functional and Numerical Analysis

Applied Electromagnetics # Control Theory

Dr. Nikolaos Berketis, Athens, Greece

BSc-Math, MSc-Appl.Math, PhD-Appl.Math, nberketis@gmail.com

Telecommunications Engineering

Applied Electromagnetics # Metrology # Applied Education

Simulation # Virtual Reality # Amateur Radio # FLOSS

Applied Physics # Electronics Engineering

Dr. Nikolitsa Yannopoulou, Scheiblingkirchen, Austria

Diploma Eng-EE, MEng-EECE, PhD-EECE, yin@arg.op4.eu

Dr. Petros Zimourtopoulos, Scheiblingkirchen, Austria

BSc-Physics, MSc-Electronics-Radio, PhD-EE, pez@arg.op4.eu

Technical Support

Konstantinos Kondylis, Doha, Qatar

Diploma Eng-EECE, MEng-EECE, kkondylis@gmail.com

Christos Koutsos, Bratislava, Slovakia

Diploma Eng-EECE, MEng-EECE, ckoutsos@gmail.com

Information for Peers Guiding Principles

This is a small, but independent, low profile Journal, in which we are all – Authors – Reviewers – Readers – Editors – free at last to be Peers in Knowledge, without suffering from either:

- Journal roles or positions,
- Professional, amateur, or academic statuses, or
- Established impact factorizations,

but with the following Guiding Principles:

Authors – We do know what work means; and we do respect the research work of the scientist – engineer; and we do want to highlight this work; and we do decided to found this Journal; and we do publish this work openly; and furthermore, we do care for the work of the technical author, especially the beginner one, whom we do support strongly as follows:

- 1 We encourage the author to submit his own paper written just in Basic English plus Technical Terminology.
- 2 We encourage the author even to select a pen name, which may drop it at any time to reveal his identity.
- 3 We encourage the author to submit an accepted for publication paper, which he was forced to decline that publication because it would be based on a review with unacceptable evaluation or comments.
- 4 We encourage the author to resubmit a non accepted for publication paper that was rejected after a poor, inadequate, unreasonable, irresponsible, incompetent, or ticking only, review.
- 5 We encourage the author to submit a paper that he already self-archived on some open repository, such as arXiv.org.
- 6 We encourage the author to self-archive all of the preprint and postprint versions of his paper.
- 7 We provide the author with a decent, express review process of up to just 4 weeks, by at least 2 peers, never have been co-authors with him.
- 8 We provide the author with a selection of review process between: a traditional, anonymous, peer review decision, and an immediate online pre-publication of his paper followed by an open discussion with at least 2 reviewers.

About

- 9 We immediately accept for publication a research paper directly resulting from a Project Report, Diploma-, Master-, or PhD-thesis, which the author already has successfully defended before a committee of experts and he can mention 2 members of it, who reviewed and approved his work.
- 10 We immediately publish online a paper, as soon as, it is accepted for publication in the Journal.
- 11 We quickly print-on-demand an issue every 3 papers, in excess of the 3 issues we regularly publish 3 times a year on January, May, and September.
- 12 We do not demand from the author to transfer his own copyright to us. Instead, we only consider papers resulting only from original research work, and only if the author does assure us that he owns the copyright of his paper and that he submits to the Journal either an original or a revised version of his paper, for either publication after review, or even an immediate re-publication if this paper has already been published after review, under the Creative Commons Attribution 3.0 Unported License CC-BY 3, in any case.

Reviewers – Any peer may voluntarily becomes a reviewer of the Journal in his expertise for as long as he wishes. Each author of the Journal has to support the peer-to-peer review process by reviewing one paper, written by non co-author(s) of him, for every one of his papers published in the Journal.

Readers – Any reader is a potential reviewer. We welcome online comments and post-reviews by the readers.

Editors – Any editor holds a PhD degree, to objectively prove that he really has the working experience of passing through the established publishing system. An editor pre-reviews a paper in order to check its compliance to the Guiding Principles and to select the appropriate reviewers of the Journal. We can only accept for consideration papers in the expertise areas currently shown in the Editorial Board page. However, since we are willing to amplify and extend the Scope of the Journal, we welcome the volunteer expert, in any subject included into it, who wants to join the Board, if he unreservedly accepts our Guiding Principles.

Electronic Publishing

www.ftpj.otoiser.org

Printing-on-Demand

pod@ftpj.otoiser.org

Directly:

Georgios Tontrias, msn.expresscopy.xan@hotmail.com
ExpressCopy, V.Sofias 8, 671 00, Xanthi, Greece

Submissions

sub@ftpj.otoiser.org

Online:

www.ftpj.otoiser.org

More – Detailed information will be available soon at:

www.ftpj.otoiser.org/gp

Antennas Research Group – Non Profit 12(3)* Union of Persons

* The Constitution of Greece, Article: 12(3) 2008:
www.hellenicparliament.gr/en/Vouli-ton-Ellinon/To-Politevma

* The Hellenic Supreme Court of Civil and Penal Law:
www.areiospagos.gr/en/ – Court Rulings:Civil|A1|511|2008

This document is licensed under a Creative Commons Attribution 4.0 International License – <https://creativecommons.org/licenses/by/4.0/>

Electrical Machine Insulation: Traditional Insulating Materials, Nanocomposite Polymers and the Question of Electrical Trees

M.G. Danikas, R. Sarathi *

Power Systems Laboratory, Department of Electrical and Computer Engineering, Democritus University of Thrace, Xanthi, Greece [1]

Department of Electrical Engineering, Indian Institute of Technology Madras, Chennai, India [2]

Abstract

Electrical machine insulation consists basically of epoxy resin and mica foils. Both are good insulating materials and they proved to withstand large partial discharges and/or the combined attack from electrical, thermal and mechanical stresses. Nowadays alternatives to the traditional insulating materials exist, namely those of nanocomposite polymers, which present somehow improved performance regarding the aforementioned stresses. It is the aim of the present paper to investigate mechanisms of electrical treeing and/or breakdown in machine insulation as well as to study possible improvements with the aid of nanocomposite polymers.

Keywords

Machine insulation, nanocomposite polymers, breakdown, partial discharges, breakdown strength, pre-breakdown phenomena

Introduction

Machine insulation is generally characterized by hard materials, capable to withstand partial discharges of quite large magnitudes. An electrical insulation in high voltage machines must have a high breakdown strength, a good long term functioning without possible problems em-

anating from degradation effects (partial discharges (PD), treeing phenomena etc.) and certainly rather small - if any - leakage currents. Such insulation must also have a satisfactory thermal performance and must withstand relatively high temperatures. The electrical and thermal properties of such insulation

must not be deteriorated because of some extreme conditions, i.e. the highest possible temperature to be tolerated should not provoke any alterations to the insulation itself. The electrical machine insulation should have good long term functioning and it should present only small changes (to be tolerated) after many thermal cycles. Moreover, electrical machine insulation should have a satisfactory mechanical behavior, i.e. high mechanical strength which should stay high even at higher temperatures.

Thermal stressing may cause some sort of breakdown on the surface of mica sheets, whereas mechanical stressing may cause also fissures in epoxy resin and in mica. Electrical stressing may cause partial discharging in possible existing imperfections of the insulation and thus lead to electrical failure [1]. Needless to say that all properties - electrical, mechanical and thermal - are vital for the reliable operation of rotating machines. The insulation should have satisfactory electrical properties, it should withstand the expansion and contraction during temperature cycles and it should respond in a good way to mechanical stresses.

Rotating machines can be divided into two categories:

those with voltage ratings less than 6.6 kV and those with voltage ratings higher than 6.6 kV. Mica has been used for years in the electrical machine industry. Mica sheets with a backing of glass cloth and of binding material, like epoxy resin, have been the classical insulation systems for rotating machines. Generally speaking, such insulating systems have proved to be reliable [2]-[4].

Research on possible breakdown mechanisms in such systems revealed that PD and electrical treeing may lead to breakdown [5]. As is pointed out in published work, electrical trees propagate through the weaker material and they tend to reach the opposite electrode, resulting thus in total failure [2]-[5].

It is the aim of the present paper to explore mechanisms of failure both in conventional insulating materials used for rotating machines as well as to investigate alternative insulating systems based on a new series of insulating materials, namely, the nanocomposite polymers. Simulation data will be presented for conventional insulating materials and possible improvements will be suggested. It has to be noted that this review is by no means an

exhaustive one. Rotating machine insulation is a complex insulating system and, in the context of the present paper, only some aspects of it will be treated. It should also be added that the present review does not deal with the subject of enameled wiring, which will possibly consist the topic of another review paper.

At this stage, it would be fitting to state that review papers are useful even today. Why? Because they give some insight to the newcomer as well as to the experienced scientist regarding a particular subject. Although we are flooded with much information from the Internet with practically thousands and thousands of references (books, papers, journals etc.), a review paper can always be a starting point for the interested person. The purpose of a review paper is not simply to collect information on a particular subject, it is rather to offer - besides a wealth of information and the relevant references - comments and interrelations between experimental data, criticism and approaches for possible new theoretical models, it is probably the right place to also propose some new insights from the reviewer, it is the place to offer some thoughts for possibly new de-

velopments. This is why we believe in the validity of such efforts, this is why we think that reviews will always be useful, despite the flood of new scientific and technical information, almost on an every second-basis.

Conventional Insulating Materials for Rotating Machines

Mica sheets are used in rotating machine insulation as traditional insulating material. Mica is a natural mineral. Its crystalline nature gives very strong bonds in one plane and very weak Van-der-Waals's forces in the plane normal to this. The consequence of that is that mica can be split easily into flakes [2]. Mica has excellent tracking strength, high breakdown field strength, very good resistance to PD, high volume resistance as well as good thermal stability up to 6000 C [2]. For high voltage applications, mica sheets use as bonding material epoxy resin, a thermosetting material with very good electrical properties and good resistance to PD. Moreover, for a resin to be suitable for long-term operation, it requires high thermal stability with low electrical loss at service temperature and at power frequency, excellent adhesion to mica, high resistance to

moisture, chemicals and other contaminants, high mechanical strength over a range of service temperatures, dimensional stability, ability to operate at higher temperatures and a short cure time at 1500 C to 1600 C [6]. In typical rotating machine insulations, mica sheets form a sort of sandwich with epoxy resin, thus rendering the electrical breakdown of such a combined system rather difficult [7].

One of the problems facing the mica/epoxy resin insulation is the one of electrical trees, which may grow and eventually bridge the gap between the electrodes causing thus ultimate failure. Elongation of electrical trees has been experimentally observed in [8], [9]. In such a case, the mica sheets consist the harder material and the electrical trees propagate via the epoxy resin, which is the weaker material. Electrical trees propagate, generally speaking, more easily in epoxy resin, a fact also confirmed in another paper [10].

Normally prior to electrical treeing, PD take place in defects in the machine insulation. Such defects may come about from construction or from the stressing of the insulation. As said, the stressing in machine insulation can be multi-factor stressing, i.e. the insulation may

be stressed because of high voltage, thermal cycles as well as from mechanical loading [11]. Defects can come about as enclosed cavities, delaminations, problematic interfaces, possible enclosed foreign particles etc. The consequence of all these is local electric field enhancement, PD activity which subsequently may result to insulation damage. Such PD can be quite intense in the order of 1-10 nC [12], [13]. These phenomena can have a cumulative effect and cause aging and shortening of the lifetime of machine insulation [14], [15].

Rotating machine insulation systems suffer from what most of composite insulating systems suffer, i.e. the presence of interfaces. Mica sheets and epoxy resin consist of a system with multiple interfaces. Interfaces may encourage electric field intensifications in the weaker material and, thus, the cause of deteriorating phenomena. On the other hand, thinner (and consequently more) mica sheets may delay the discharge process in that discharges lose energy at the interfaces, i.e. a discharge having penetrated one layer could not enter the next layer of material until the spot on the interface, centred on the channel, had been charged to a potential which

could produce a field comparable with that of the channel at the level in question [16].

Breakdown mechanisms inside the insulation may start from defects due to excessive electrical field. Previous work done on epoxy resin samples showed that it is possible that trees emanate from enclosed cavities, causing thus conditions for further propagation and eventual failure [17]. Although such emanating trees are still put into question from some researchers [18], experimental evidence can hardly be refuted. PD cause pits on the inner surface of such cavities possible and then electrical trees may ensue. One aspect that should be stressed is that of the applied voltage: for meaningful comparisons of data (perhaps with several years interval) and/or comparison of data in the same laboratory or factory, it is essential to use identical wave shapes of voltages [19]. It is something that people tend to forget but something that comes out when PD measurements - comparisons of such measurements at different times - have to be performed.

Mica barriers delay tree propagation. Depending on the dielectric constants of mica sheets and of epoxy resin as

well as on the threshold voltages, electrical trees may take different forms but, in general, they seem not to penetrate the mica barriers [20]. Mica barriers may result in a major increase in breakdown time, this increase being depended on both the tree growth time and the set-in of the failure time [21].

The interplay and interdependence between PD and electrical treeing has been shown before, where in narrow holes of short length small PD in a rather high number may be produced whereas in holes of larger diameter and longer length, fewer PD but with larger magnitudes will ensue [22]. In any case, trees tend to grow around the mica barriers [23].

A crucial factor determining tree propagation along a mica barrier is the type of chemical bonding between mica and epoxy resin. The stronger the bonding, the higher the resistance to the tree propagation [24]. Imperfections may result from imperfect mica sheet overlapping, from the creation of cavities in parts which are at the edges of windings, from not so smooth mica sheets or from abrupt interruptions of mica sheets (because of constructional faults) [25]. Furthermore, the layered mica can delaminate under thermo-mechanical stresses and thus cause

cavities, which in turn will lead to PD [25]. Examples of imperfections are given below. In Fig. 1, a winding insulation is shown and the different radii of mica sheets are noted. In Fig. 2, imperfections in winding insulation are noted.

Experimental evidence that a mica barrier may withstand electrical treeing much better than epoxy resin was given in [10], where it was also noted that the breakdown strength of such a combination depends on the thickness of mica sheets, on the thickness of epoxy resin, the temperature, the type of epoxy resin as well as the cleanliness of both materials.

Generally speaking, the time to breakdown is the sum of the time from the initial PD activity and the creation of initial tree channels and the growth time of trees to the final breakdown. For some authors, there is an incubation period during which PD activity is barely detectable and trees grow only slightly, then a period of tree expansion follows and finally a widening of the smaller tree channels which eventually leads to bridging of the electrodes and the breakdown [9]. For others, two stages of treeing are observed: first, the inception period which may be for very many cycles, follo-

wed by a relatively short period of tree growth. PD detection reveals that a transition is accompanied by big increase in the PD magnitude, which persists until breakdown [26]. A good account of PD measurements and the effect of PD in rotating machines were given in [27], where examples of "good" (i.e. relatively free of PD) and "bad" (with delaminations) windings were presented. In [27], it was emphasized that for any comparison between PD measurements, the experimental conditions play a predominant role, a statement that echoes reference [19]. Certainly, a condition assessment of windings can be done by continuously monitoring the PD activity, taking into account that an increase in discharge activity occurs when the insulation is eroded and also that a PD activity can manifest itself both as internal PD activity and as surface discharges [28]. A good account of the relation between PD and tree structures was given in [29], where it was emphasized that electron avalanches, field fluctuations arising from the discharges themselves, local variations in permittivity and resistance of the insulation can play a decisive role for the electrical tree propagation. Minor variations of trapped space charges may

lead to preferred directions of propagation and, thus, may also affect the tree channel formation for new tree channel formation.

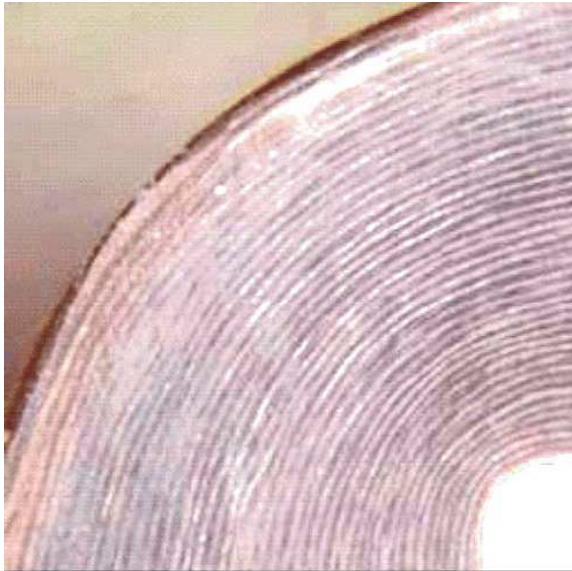


Fig. 1: Winding insulation. Note the different radii which cause the different bending of mica sheets (after [10])

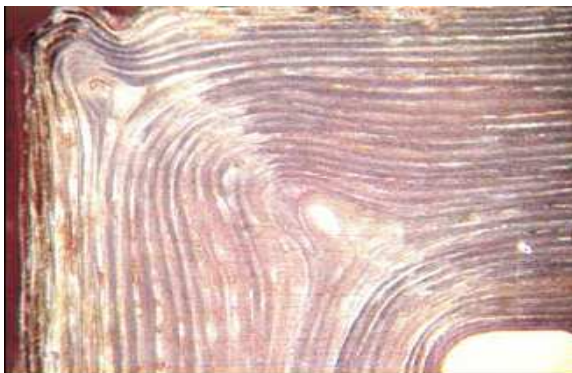


Fig. 2: Imperfections of winding insulation at the edges (after [10])

It is not to underestimate that several years ago, problems with very small PD - not to say with phenomena below the inception voltage - were noticed in turbine generator armature winding insulations, namely that although such windings withstood standard testing, they failed short after the beginning of their service. Why was that? Possibly because extremely small PD, not easily detected by conventional methods, are at work and little by little could deteriorate the insulation of such windings [30].

Mica sheets offer a good protection to breakdown paths and/or to electrical treeing. This certainly depends on the applied voltage. Simulations in epoxy resin/mica sheets show that there is a voltage limit beyond which breakdown even of mica sheets is possible. From a certain voltage value upwards, mica sheets are also prone to treeing, as the following figures show. In Fig. 3, the applied voltage is 28 kV, which creates a rather distinguished form of treeing in the epoxy resin but which cannot penetrate the mica sheet. On the contrary, in Fig. 4, with another higher applied voltage, the mica sheet is penetrated by the electrical trees and in Fig. 5, there is a complete failure of the system epoxy

resin/mica sheet. It is to be noted that in Fig. 4 as well as in Fig. 5, the trees in the epoxy resin are of bush-type and in the mica sheet of branch-type. This is because trees in the weaker material are far more numerous and thus they are interconnected much more densely than in the stronger material. The simulations shown in Figs. 3, 4 and 5 were performed with the method of Cellular Automat [31]-[33]. The different types of electrical trees in epoxy resin (bush-type) and in mica sheet (branch-type) depend on the applied voltage as well as on the type of the insulating material [34]. In Figs. 4 and 5, the progression of treeing towards the opposite electrode can well be seen. It is indeed a question of time before the treeing structure reaches the opposite electrode.

All in all we observe that conventional insulating materials functioned more or less satisfactorily. Both experiments and simulations indicated that breakdown paths follow the easiest way to the other electrode, i.e. through the epoxy resin, which is the weaker of the two materials. Breakdown of the mica sheets may be possible but this depends on their thickness as well as on the voltage applied.

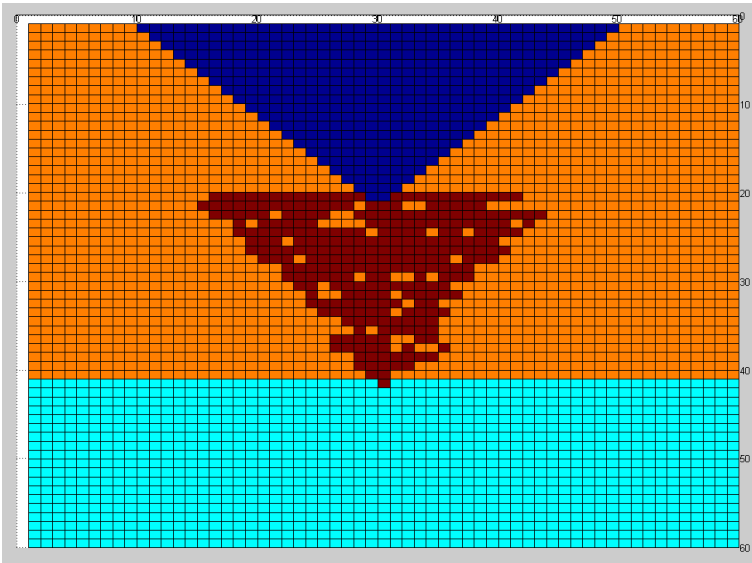


Fig. 3: Propagation of electrical tree in epoxy resin and mica sheet. Applied voltage 28 kV, breakdown strength of epoxy resin is 26 kV/mm, breakdown strength of mica sheet is 35 kV/mm

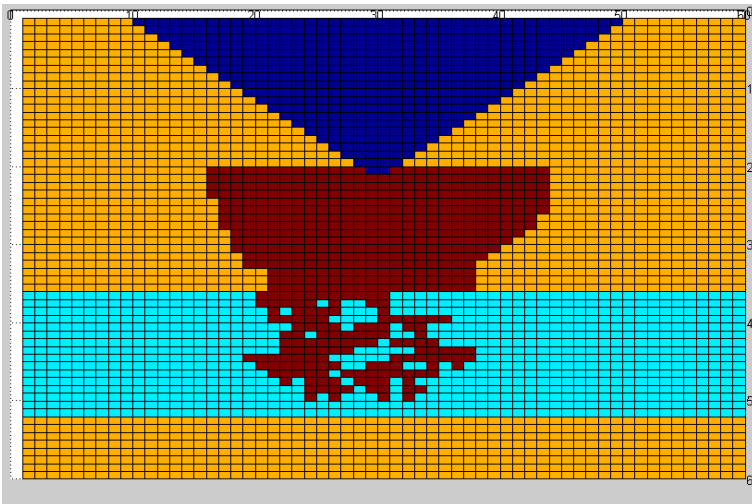


Fig. 4: Propagation of electrical tree in epoxy resin and mica sheet. Applied voltage 34 kV, breakdown strength of epoxy resin is 26 kV/mm, breakdown strength of mica sheet is 35 kV/mm

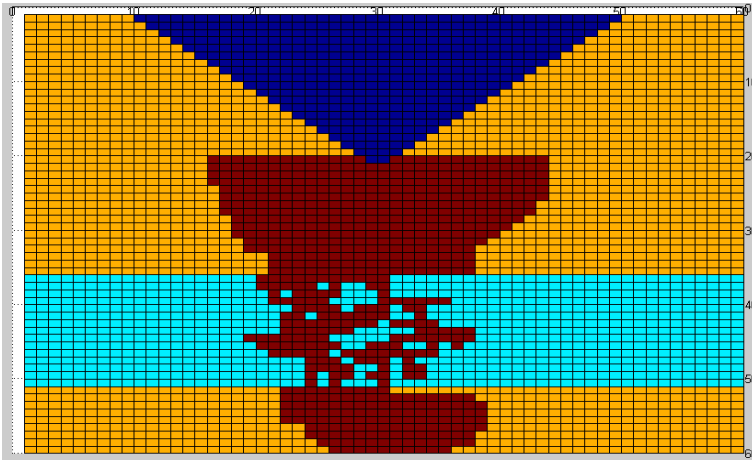


Fig. 5: Propagation of electrical tree in epoxy resin and mica sheet. Applied voltage 34 kV, breakdown strength of epoxy resin is 26 kV/mm, breakdown strength of mica sheet is 35 kV/mm

Is there a way to improve even more the electrical performance of such a composite system? The following section will concentrate on some of the modern materials proposed for machine insulation.

(As an explanatory note to this paper: It is evident from the present review that here we are not interested in an estimation of lifetime expectancies of the insulation in connection with the quality of the insulation itself. Models of lifetime expectancies have been developed and commented upon elsewhere [35]. It should also be emphasized that, the present paper is not concerned with the technicalities of the measurements of PD in rotating machine insu-

lation either [36]).

Nanocomposite Polymers for Rotating Machine Insulation

A recent paper on nanodielectrics applications has pointed out that "three types of insulations have been developed with great improvements in the resistance to partial discharges: first in random-wound wire enamel; second in form-wound strand enamel; and third in form-wound stator bar insulation or ground wall insulation" [37]. Of these aforementioned applications, the one that interests us most for the time being is the third one, i.e. that of stator bar insulation. The other two types of insulation may constitute

the subject of yet another review paper. In the context of the present paper, we will concentrate on some of the novel insulating materials concerning the stator bar insulation.

Results reported on 13.8 kV form-wound hydro generator bars made of epoxy resin with a high percentage of nanoparticles of silica, indicated a very optimum performance regarding their thermal and mechanical properties. The electrical performance of such an insulation w.r.t. the PD and electrical treeing resistance was also noted [37], [38]. Better resistance to PD and electrical treeing implies less insulation thickness.

Before starting an evaluation of nanocomposite materials for machine applications, let us be clear on a certain point: the novel materials may offer some new insights regarding the endurance of the insulation of electrical machines, but the condition-based maintenance treatment is not expected to change that dramatically. In other words, we are still far from new aging models and/or accelerated laboratory testing [40]. In yet other words, synergy effects may occur also with the new materials and, when two or more aging mechanisms are at work simultaneously, the total degradation

may not be a single algebraic sum of the separate degradation outcomes [39], [40].

It is rather clear that from the two basic components that constitute the rotating machine insulation, the one that is expected to be prone for the addition of nanoparticles, is the epoxy resin. Inorganic nitrides and oxides (such as, AlN, BN, SiO₂, ZnO, Al₂O₃ and TiO₂ among others) may be added in small amounts, and if homogeneously dispersed, they may show potentially better electrical and thermal properties than the conventional epoxy resin [41]. The need for good dispersion of the nanoparticles as well as the important role of interfaces in the nanocomposite polymers has been discussed elsewhere and there is no need for any repetition here [42]. Boron Nitride (BN) has been used to enhance the dielectric properties of the groundwall insulation system for generators because it has a reasonably high resistivity (10¹⁵ ohm.cm) and breakdown strength (53 kV/mm) as well as a rather small relative permittivity (around 4). Such inherent properties render BN a good nanoparticle material to be added to epoxy resin [41]. Moreover, the addition of BN nanoparticles improved the thermal conductivity of epoxy resin. In another pub-

lication, epoxy resin was mixed with Al₂O₃ nanoparticles [43]. The breakdown strength of such a nanocomposite was comparable to the breakdown strength of conventional epoxy resin but with a lower scatter in values. In [43], particular attention was paid to the fact that nanoparticle agglomerations were dependent on the method of preparation of the nanocomposite. As is well known, nanoparticle agglomerations affect the PD, the electrical tree propagation and the breakdown strength of nanocomposites [44]. Zirconia nanoparticles added to epoxy resin offer an improvement of the breakdown strength as well as of the thermal and dielectric properties. Addition of zirconia nanoparticles to about 5 wt% gives a higher breakdown strength compared to conventional epoxy resin [45]. It must, however, be noted that in [45], there are in certain parts of the paper discrepancies between the text and the experimental data.

Fillers in insulation systems for rotating machines are investigated in [46], a most thorough review publication. Without going into many details about the application of nanocomposites for machine insulation and the role of nanoparticles, that paper points out several vital as-

pects of insulation engineering, namely, the effect of electrical, mechanical and thermal stresses, which leads to delaminations and/or void formation. Nanoparticles are deemed to restrain the charge transport processes. As a consequence, nanocomposites exhibit less space charge formation than conventional polymers or their microparticle counterparts. The novel approach of [46] is that it insists on a concept for void formation that is based on a micro-mechanical approach, i. e. void formation can be considered as a process by which the insulating material accommodates mechanical energy, no matter whether this energy is purely mechanical, electro-mechanical or thermo-mechanical in nature. In the case of nanocomposites, crack initiation may be considered as having a critical nucleation size. Crack initiation sites may well come from nanoparticles aggregates, as was noted in [47]. In [47], the breakdown strength of epoxy resin/clay nanocomposites was investigated, the clays being Cloisite 20A (C20A) and Cloisite 30B (C30B) with different levels of loading. It was reported that the breakdown strength depends on the level of loading (around 5wt% being the optimum) and also on the type of nanocomposite structure (intercalated nano-

composite or exfoliated nano-composite), with the exfoliated type giving the higher breakdown strength. Clay C30B gave the better results since it is more hydrophilic than clay C20B and, consequently, it has a greater affinity for epoxy resin. Epoxy pre-polymers can more easily intercalate into C30B clay galleries, increasing thus the interlayer spacing (more details on intercalated and exfoliated structures in [48], [49]). In yet another paper, it was reported that appropriate nanoparticles, if suitably added, may enhance the breakdown time of conventional epoxy resin by a factor of ten [50].

Nanosized particles were also discussed in [51], where excellent voltage endurance results seemed to be very promising. Large percentages of silica nanoparticles (up to 25 wt%) were reported for making practical coils in VPI (vacuum pressure impregnation) epoxy resin successfully [52]. The reported percentage seems to be excessive in view of previous publications. Nevertheless, for nanocomposite materials in high voltage machinery, the problems remain much the same as with the more traditional insulations, namely that the heat transfer must be satisfactory also for the new

materials, the mechanical strength must be high enough and the risk from PD must be minimized [51]. Recent work on mechanical properties showed that, with epoxy resin and montmorillonite (MMT) clay mineral, natural frequency of vibration and damping factor of the said material increase by adding up to 5 wt% of nano clay [53]. Recent work also indicated that epoxy resin with 10 wt% TiO₂ nanoparticles improved greatly the ac breakdown strength and the time to breakdown [54].

The percentage of nanoparticles to be included in a base polymer matrix depends on the type of nanoparticles as well as on the base polymer. It has been reported, for example, that with epoxy resin and layered silicate, just small amounts of nanoparticles are enough for the improvement of partial discharge resistance, whereas in other publications, it was confirmed that only 2 wt% of nanoparticles is sufficient to improve the partial discharge resistance of polyamide/layered silicate nanocomposites [55]-[57]. Small amounts of nanoparticles (3 wt% of SiO₂ nanoparticles) were also reported to improve the glass transition temperature of epoxy resin in comparison with the neat epoxy resin. This is due to the re-

duction of polymer chains mobility. On the other hand, in the same paper, the resistivity of epoxy resin with 3 wt % of TiO_2 nanoparticles was lower by one order of magnitude with respect to pure epoxy resin [58]. Paper [58] is a good example of the dependence of the nanocomposite properties on the nature of the added nanoparticles to epoxy resin. Further evidence as to the effect of the percentage wt% of nanoparticles in epoxy resin is offered in [59], where POSS (polyhedral oligomeric silsesquioxane) nanoparticles were added to the base material. $\tan\delta$ measurements as well as thermogravimetric analysis showed that moderate percentages in wt% (between 1% and 4%) offered the best results. The importance of nanoparticle percentage and functionalization was also emphasized in [60], where poly (butylene terephthalate) based polymers containing alumina nanoparticles were investigated, as alternative to epoxy resin. It was reported that an optimum nanoparticle percentage exists for giving a lowering of the permittivity of the resulting nanocomposite as well as a lowering of $\tan\delta$. The lowering of the aforementioned parameters can probably be ascribed to the restriction of polymer chain movement by nanoparticles due

to the modified molecular structure and chain dynamics, which cause a strong surface interaction between the nanoparticle and the polymer matrix [61].

Treeing effects in nanocomposite epoxy resin propagate through the base material and do not go through the nanoparticles [44], [62]. Erosion depth was found to be minimal for a combination of micro- and nano- particles [62]. The desirable result of having good thermal conductivity and low dielectric constant is more difficult to obtain. In [60], it was shown that epoxy resin with h- or c- boron nitride nanoparticles presents higher thermal conductivity at the expense of a higher dielectric constant, whereas epoxy resin with silica nanoparticles has a much lower dielectric constant but with a far lower thermal conductivity. The reported lower thermal conductivity of epoxy resin with silica nanoparticles, however, was contradicted in [52], [63]. In [52], it was mentioned that nanosized SiO_2 particles act as barriers to the treeing phenomena and hinder propagation. Moreover, the mechanical and thermal properties are improved significantly, thus giving a promising new insulation system with less thickness and bet-

ter heat transfer. The disagreement between [62] and [52] may be due to the different processing methods as well as to the different size and/or shape of the nanoparticles.

Differentiation between short-time breakdown and long-term failure in nanocomposites was reported in [64]. As the authors pointed out, short-term breakdown properties depend on the applied voltage waveforms as well as the bonded region of the nanoparticles, whereas for long-term aging and failure, the transitional region and the cohesive energy density (CED) of the polymer matrix play the dominant role. They remarked that the percentage weight of nanoparticles to be included in a polymer matrix depends on the matrix itself, the chemical nature of the nanoparticles, their functionalization, their size and their bonding to the polymer matrix. For example, Ag nanoparticles of about 20 nm in size mixed with epoxy resin at about only 0.05 wt% may improve the short-term breakdown strength by about 30% w.r.t. the pure epoxy resin. Regarding nanoparticle content and the polymer matrix, it was shown that with 1 wt%, epoxy resin nanocomposite has a better long-term electrical aging resistance than its

polyethylene counterpart. The authors of [64] also remarked that PD resistance improves as the size of nanoparticles decreases because the probability of electron collision with nanoparticles increases leading the electron transport to become harder. The latter statement agrees with simulation results presented in [42].

Rotating machine insulation will be better served with nanomaterials, if such materials include nanometric layered silica nanoparticles, since the latter offer better PD resistance and improved mechanical properties. As the design field nowadays for conventional machine insulation is limited to only about 3 kV/mm [65], silica nanoparticles may help to increase the design field [66]. Such layered silica nanoparticles present a barrier behavior, rendering them interesting for applications.

Possible Charging Phenomena Below Inception Voltage

The present paper did not deal with either the technicalities of PD measurements in rotating machine insulation or the modeling of lifetime of such insulation under a variety of simultaneous stresses (electrical, thermal and mechanical) [67]-[69]. The literature on such topics

is very rich to be dealt with in the present work. This paper did not deal either with the possibility of charging phenomena below the so-called inception voltage. Relevant work done in the past revealed that it is possible to have sudden failures in insulation systems (including those of rotating machines), even though the equipment passed the relevant specification tests [30], [70]-[76]. More recent research on the topic of charging phenomena below inception voltage indicated that in both base epoxy resin [77], and in epoxy resin with TiO₂ nanoparticles and microparticles, charging phenomena were observed [78]. It has, however, to be noted that in the case of epoxy resin with nanoparticles and microparticles, charging phenomena below inception were rather sporadic. This may be due to the bonding strength between fillers and matrices, the interfiller space or matrix volume surrounded by neighboring fillers and to the morphology in the interfiller space [79]. The whole subject of possible charging effects below the so-called inception voltage cannot be dealt with in the present paper. It is, however, a subject which unjustly does not attract much attention from the insulation community. The authors intend to come back

to this subject, possibly with another review paper concentrated on this subject only. Certainly, for the treatment of this question, important publications such as [80]-[83], must be taken into account.

Further Developments

It is understandable that there may be alternatives to the epoxy resin as insulating material for rotating machines. Such alternatives may be silicone based, resin rich insulation materials due to their thermal stability, flexibility, anti-vibration and very good electrical properties. It would be interesting to see admixtures of such materials with nanoparticles, as a further exploration for possible applications [84]. Furthermore, more fundamental research has to be performed regarding the combined stresses on nanocomposite polymers. Since the various stresses (electrical, thermal, mechanical etc.) are applied not sequentially but combined [85]-[88], experimental work has to be done in this respect. In [63], detailed steps for future work have been proposed, such as thermal aging and classification tests at different temperatures, electrical aging - voltage endurance tests at various levels resulting in lifetime

curves, multifactor aging as well as thermo-mechanical bending endurance in parallel with electrical stress tests. On a more general basis, optimization of nanocomposite material fabrication methods, a better understanding of interfaces and possible combinations of micro- and nanocomposites may be research fields in the future. The need for nanocomposites having high breakdown strength, low thermal expansion coefficient, high thermal conductivity, satisfactory long-term aging and good withstanding capability to multi-stressing, will be even more pronounced in the coming years [89]. The variety of nanoparticle sizes and types, the variety of polymer matrices as well as the variety of processing methods, leaves us with the hope that optimal combinations w.r.t. the electrical, mechanical and thermal properties, may be found for the benefit of the electrical machines industry.

Conclusion

In this paper a review was performed for both traditional and modern insulating materials for rotating machine insulation. Traditional insulation mainly consists of mica sheets and epoxy resin,

with the former being the stronger of the two materials. Electrical trees tend to propagate through the epoxy resin and have greater difficulty in breaking through the mica sheets. Nanocomposites on the other hand offer generally better insulating properties. The nanoparticles that are dispersed in the polymer matrix tend to act as extremely small barriers, preventing thus the propagation and growth of electrical trees. The performance of the nanocomposite polymers depends on a variety of parameters, such as, for example, the type of polymer matrix, the type of nanoparticles, their functionalization and their size.

Acknowledgments

One of the authors (MGD) has to thank Miss D. Christantoni for the electrical tree simulations appearing in this paper. The same author has also to thank his colleagues at Xi'an Jiaotong University, State Key Laboratory of Electrical Insulation and Power Equipment, Xi'an, People's Republic of China, for letting him to carry out experiments on pure epoxy resin and nanocomposite samples and to study charging effects at and below inception voltage.

References

- [1] Pemen A.J.M., "Detection of partial discharges in stator windings of turbine generators", Ph.D. Thesis, Eindhoven University of Technology, ISBN 90-386-1720-8, 2000
- [2] Kind D., Kaerner H., "High-Voltage Insulation Technology", Eds. Friedr. Vieweg & Son, Braunschweig/Wiesbaden, Germany, 1985
- [3] Wadhwa C.L., "High voltage engineering", Eds. New Age International (P) Ltd. Publishers, New Delhi, 1994
- [4] Naidu M.S., Kamaraju V., "High voltage engineering", Eds. Tata McCraw-Hill Publishing Co. Ltd., New Delhi, 1995
- [5] Kuffel E., Zaengl W.S., Kuffel J., "High voltage engineering: Fundamentals", Eds. Newness, Oxford, 2000
- [6] Clemson C.S., "Evaluation of micaceous composites", in "Electrical Insulation", Edited by A. Bradwell, Eds. Peter Peregrinus Ltd. London, UK, 1983, pp. 219-233
- [7] Kim T.J., Nelson J.K., "Assessment of deterioration in epoxy/mica machine insulation", IEEE Transactions on Electrical Insulation, Vol. 27, No. 5, October 1992, pp. 1026-1039
- [8] Vogelsang R., Farr T., Froehlich K., "The effect of barriers on electrical tree propagation in composite insulation materials", IEEE Transactions on Dielectrics and Electrical Insulation, Vol. 13, No. 2, 2006, pp. 373-382
- [9] Vogelsang R., Fruth B., Farr T., Froehlich K., "Detection of electrical tree propagation by partial discharge measurements", Proceedings of 15th International Conference on Electrical Machines, Brugge, Belgium, 2002
- [10] Vogelsang R., Fruth B., Froehlich K., "Detection of electrical tree propagation in generator bar insulations by partial discharge measurements", Proceedings of 7th International Conference on Properties and Applications of Dielectric Materials, Nagoya, Japan, 2003, pp. 281-285
- [11] Lehmann K., "Teilentladungs-Monitoring an Grossgeneratoren", Ph.D. Thesis, ETH Zuerich, FG Hochspannungstechnik, 1994
- [12] Binder E., "Techniques of partial discharge measurements", CIGRE-Symposium, Vienna, Austria, May 1987

- [13] Lehmann K., Zaengl W.S., "Thoughts on partial discharge monitoring of rotating machines", Proceedings of 6th International Symposium on High Voltage Engineering, New Orleans, USA, August 1989, paper 43.07
- [14] Botts J.C., "Corona in high voltage rotating machine windings", IEEE Electrical Insulation Magazine, Vol. 4, No. 4, 1988, pp. 29-34
- [15] Gjaerde A.-C., "Multi-factor ageing of epoxy - The combined effect of temperature and partial discharges", Ph.D. Thesis, The Norwegian Institute of Technology, Faculty of Electrical Engineering and Computer Science, Department of Power Engineering, 1994
- [16] Morshuis P., "Interfaces: to be avoided or to be treasured?", Proceedings of IEEE International Conference on Solid Dielectrics, Bologna, Italy, June 30 - July 4, 2013, pp. 1-9
- [17] Danikas M.G., Karlis A.D., "Some observations on the dielectric breakdown and the importance of cavities in insulating materials used for cables and electrical machines", Advances in Electrical and Computer Engineering, Vol. 11, No. 2, 2011, pp. 123-126
- [18] Danikas M.G., Adamidis G., "Partial discharges in epoxy resin voids and the interpretational possibilities and limitations of Pedersen's model, to be avoided or to be treasured?", Archiv für Elektrotechnik, Vol. 80, No. 2, 1997, pp. 105-110
- [19] Boenig W., "Luftgehalt und Luftspaltverteilung Geschichteter Dielektrika", Archiv für Elektrotechnik, Vol. 48, No. 1, 1963, pp. 85-96
- [20] Sweeney P.J.J., Dissado L.A., Cooper J.M., "Simulation of the effect of barriers upon electrical tree propagation", Journal of Physics D: Applied Physics, Vol. 25, No. 1, 1992 pp. 113-119
- [21] Gefle O.S., Lebedev S.M., Uschakov Ya.V., "The mechanism of the barrier effect in solid dielectrics", Journal of Physics D: Applied Physics, Vol. 30, No. 23, 1997, pp. 3267-3273
- [22] Dissado L.A., Fothergill G.C., "Electrical degradation and breakdown in polymers", Eds. Peter Peregrinus Ltd., London, UK, 1992
- [23] Mitsui H., Yoshida K., Inoue Y., Kenjo S., "Thermal cyclic degradation of coil insulation for rotating machines", IEEE Transactions on Power Apparatus and Systems, Vol. PAS-102, No. 1, 1983, pp. 67-73

- [24] Vogelsang R., Farr T., Fröhlich K., "Electrical tree propagation along barrier-interfaces in epoxy resin", Annual Report on Conference of Electrical Insulation and Dielectric Phenomena (CEIDP), 2002, Cancun, Mexico, pp.946-950
- [25] Vogelsang R., Brutsch R., Froehlich K., "How imperfections in mica tape barriers influence tree growth and breakdown time", Annual Report on Conference of Electrical Insulation and Dielectric Phenomena (CEIDP), 2003, Albuquerque, USA, pp. 657-660
- [26] Cooper R., "Breakdown in solids", in "Electrical Insulation", edited by A. Bradwell, Eds. Peter Peregrinus Ltd. London, UK, 1983, pp. 33-51
- [27] Wichmann A., "Teilentladungen in Isolierungen rotierender Maschinen", edited by D. Koenig and Y. Narayana Rao, Eds. vde verlag, Berlin, Germany, 1993, pp. 139-161
- [28] Edwards D.G., "Slot discharge mechanisms in high voltage rotating machines", Proceedings of International Conference on Partial Discharge, University of Kent in Canterbury, UK, September 28030, 1993, pp. 113-114
- [29] Dissado L.A., "Discharges and the formation of tree-shaped breakdown structures", Proceedings of International Conference on Partial Discharge, University of Kent in Canterbury, UK, September 28030, 1993, pp. 60-63
- [30] Bruning A.M., "Design of electrical insulation systems", Ph.D. Thesis, University of Missouri-Columbia, USA, 1984
- [31] Danikas M.G., Karafyllidis I., Thanailakis A., Bruning, A.M., "Simulation of electrical tree growth in solid dielectrics containing voids of arbitrary shape", Modelling and Simulation in Materials Science and Engineering, Vol. 4, 1996, pp. 535-552
- [32] Vardakis G.E., Danikas M.G., "Simulation of electrical tree propagation in a solid insulating material containing spherical insulating particle of a different permittivity with the aid of cellular automata", Facta Universitatis, Series of Electronics and Energetics, Vol. 17, No. 3, 2004, pp. 377-389
- [33] Christantoni D.D., Danikas M.G., Vardakis G.E., Lekou A.T., "Simulation of electrical tree growth in a composite insulating system consisted from epoxy resin and mica sheets", International Review on Modelling and Simulation (IREMOS), Vol. 3, No. 2, 2010, pp. 241-249

- [34] Varlow B.R., Malkin G.J., "Electrical treeing in mechanically stressed insulation", IEEE Transactions on Dielectrics and Electrical Insulation, Vol. 7, No. 6, 2000, pp. 721-724
- [35] Brancato E., "Estimation of lifetime expectancies of motors", IEEE Electrical Insulation Magazine, Vol. 8, No. 3, 1992, pp. 5-13
- [36] Hutter W., "Partial discharges - Part XII: Partial discharge detection in rotating electrical machines", IEEE Electrical Insulation Magazine, Vol. 8, No. 3, 1992, pp. 21-32
- [37] Cherney E.A., "Nanodielectrics applications - Today and tomorrow", IEEE Electrical Insulation Magazine, Vol. 29, No. 6, 2013, pp. 59-65
- [38] Widner J.R., Pohlmann F., Groepel P., Hildinger T., "Nanotechnology in high voltage insulation systems for large rotating electrical machinery - First results", CIGRE WG D1.40 Functional Nanomaterials, CIGRE Session 44, Paris, France, August 27, 2012
- [39] Trnka P., Sirucek M., Svoboda M., Soucek J., "Condition-based maintenance of high-voltage machines - A practical application to electrical insulation", IEEE Electrical Insulation Magazine, Vol. 30, No. 1, 2014, pp. 32-38
- [40] Gjaerde A.-C., "Multifactor ageing of epoxy - The combined effect of temperature and partial discharges", Ph.D. Thesis, The Norwegian Institute of Technology, faculty of Electrical Engineering and Computer Science, Department of Power Engineering, 1994
- [41] Han Z., Garrett R., "Overview of polymer nanocomposites as dielectrics and electrical insulation materials for large high voltage rotating machines", NSTI-Nanotechnology Conference and Trade Show, Technical Proceedings, ISBN 978-1-4200-8504-4, Vol. 2, 2008, pp. 727-732
- [42] Danikas M.G., Sarathi R., "Interfaces in high voltage engineering: A most important question for conventional solid insulation materials as well as for nanocomposite polymers", FunkTechnikPlus # Journal, Issue 4, Year 1, May 2014, pp. 7-31
- [43] Zhao S., Hillborg H., Martensson E., Paulsson G., "Evaluation of epoxy nanocomposites for electrical insulation systems", Proceedings of the 2011 Electrical Insulation Conference, Annapolis, Maryland, USA, 5-8 June 2011, pp. 489-492

- [44] Tanaka T., "Interface properties and surface erosion resistance", in the book "Dielectric polymer nanocomposites", Edited by J. K. Nelson, Eds. Springer, Heidelberg, Germany, 2010, pp. 229-258
- [45] Pazhanimuthu C., "Investigation of dielectric and thermal properties of nano-dielectric materials in electrical applications", International Journal of Engineering and Innovative Technology (IJEIT), Vol. 2, No. 2, 2012, pp. 62-67
- [46] Wilder A.T., Neves R.S., "Fillers in insulation for rotating electrical machines", IEEE Transactions on Dielectrics and Electrical Insulation, Vol. 17, No. 5, 2010, pp. 1357-1363
- [47] Thelakkadan A.S., Coletti G., Guastavino F., Fina A., "Effect of clay on the electrical strength of epoxy/clay nanocomposites", Society of Plastics Engineers - Plastics Research on Line, "www.4spepro.org/pdf/003866/003866.pdf"
- [48] Alexandre M., Dubois P., "Polymer-layered silicate nanocomposites: Preparation, properties and uses of a new class of materials", Materials Science and Engineering, Vol. 28, No. 1-2, 2000, pp. 1-63
- [49] Sahu R.K., "Understanding the electrical, thermal and mechanical properties of epoxy nanocomposites", Ph.D. Thesis, Indian Institute of Technology Madras, Department of Electrical Engineering, Chennai, India, 2007
- [50] Imai T., Cho H., Nakamura Y., Yamazaki K., Komiya G., Murayama K., Sawa F., Sekiya H., Ozaki T., Shimizu T., "Application-oriented Researches on nanocomposite insulating materials", Proceedings of 2011 International Symposium on Electrical Insulating Materials (ISEIM 2011), September 6-10, 2011, Doshisha University, Kyoto, Japan, p. 162 (extended summary)
- [51] Stone G.C., Miller G.H., "Progress in rotating-machine insulation systems and processing", IEEE Electrical Insulation Magazine, Vol. 29, No. 4, 2013, pp. 45-51
- [52] Gropper P., Hildinger T., Pohlmann F., Weidner J.R., "Nanotechnology in high voltage insulation systems for large electrical machinery - First results", CIGRE, paper A1-103, August 2012
- [53] Sarathi R., Sahu R., Danikas M.G., "Understanding the mechanical properties of epoxy nanocomposite insulating materials", Journal of Electrical Engineering, Vol. 60, No. 6, 2009, pp. 358-361

- [54] Takala M., "Electrical insulation materials towards nanodielectrics", Ph.D. Thesis, Tampere University of Technology, Faculty of Computing and Electrical Engineering, Department of Electrical Energy Engineering, Finland, 2010
- [55] Tanaka T., Montanari G.C., Muelhaupt R., "Polymer nanocomposites as dielectrics and electrical insulation - Perspectives for processing technologies and future applications", IEEE Transactions on Dielectrics and Electrical Insulation, Vol. 11, No. 5, 2004, pp. 763-784
- [56] Kozako M., Fuse N., Ohki Y., Okamoto T., Tanaka T., "Surface degradation of polyamide nanocomposites caused by partial discharges using IEC (b) electrodes", IEEE Transactions on Dielectrics and Electrical Insulation, Vol. 11, No. 5, 2004, pp. 833-839
- [57] Lau K.Y., Piah M.A.M., "Polymer nanocomposites in high voltage electrical insulation perspective: A review", Malaysian Polymer Journal, Vol. 6, No. 1, 2011, pp. 58-69
- [58] Amendola E., Scamardella A.M., Petrarca C., Acierno D., "Epoxy nanocomposites containing ceramic fillers for electrical applications", Proceedings of 18th International Conference on Composites in Nano-Engineering, Anchorage, USA, 2010
- [59] Bocek J., Matejka L., Mentlik V., "Novel nanocomposite materials for power engineering", Proceedings of NANO-CON 2010, 12-14 October, 2010, Olomouc, Czech Republic
- [60] Russo P., Cimino F., Acierno D., Lupo G., Petrarca C., "Poly (butylenes terephthalate) based composites containing alumina whiskers: Influence of filler functionalization on dielectric properties", International Journal of Polymer Science, 2014, "<http://dx.doi.org/10.1155/2014/150589>"
- [61] Kochetov R., Andritsch T., Morshuis P.H.F., Smit J.J., "Anomalous behaviour of the dielectric spectroscopy response of nanocomposites", IEEE Transactions on Dielectrics and Electrical Insulation, Vol. 19, No. 1, 2012, pp. 107-117
- [62] Stevens G., "Nanodielectrics developments for future power sector needs", "<http://gnosysglobal.com/assets/files/Downloads/HiperNano%202013%20Recent%20Developments.pdf>"
- [63] Weidner J.R., "Nanotechnology in high voltage insulation systems for large electrical machinery - First results", CIGRE, Group Ref.: SC A1, Pref. Subject: 1,

Question No.: 1.2, Registration number: 2817

- [64] Li S., Yin G., Chen G., Li J., Bai S., Zhong L., Zhang Y., Lei Q., "Short-term breakdown and long-term failure in nanodielectrics: A review", IEEE Transactions on Dielectrics and Electrical Insulation, Vol. 17, No. 5, 2010, pp. 1523-1535
- [65] Mayoux C., "Degradation of insulating materials under electrical stress", IEEE Transactions on Dielectrics and Electrical Insulation, Vol. 7, No. 5, 2000, pp. 590-601
- [66] Cao Y., Irwin P.C., Younsi K., "The future of nanodielectrics in the electrical power industry", IEEE Transactions on Dielectrics and Electrical Insulation, Vol. 11, No. 5, 2004, pp. 797-807
- [67] Zhou Y., Qin Y., Leach C., "Cost-effective online partial discharge measurements for electrical machines: Preventing insulation failure", IEEE Electrical Insulation Magazine, Vol. 26, No. 5, 2010, pp. 23-29
- [68] Stone G.C., "A perspective on online partial discharge monitoring for assessment of the condition of rotating machine stator winding insulation", IEEE Electrical Insulation Magazine, Vol. 28, No. 5, 2012, pp. 8-13
- [69] Koenig D., "Erfassung von Teilentladungen in Hohlräumen von Epoxydharz-platten zur Beurteilung des Alterungsverhaltens bei Wechselspannung", Ph.D. Thesis, Technische Universität Braunschweig, Germany, 1968
- [70] Reynders J.P., "Electrical detection of degradation caused by partial discharges in polythene", Proceedings of International Conference on Dielectric Materials, Measurements and Applications, Cambridge, England, July 21-25, 1975, pp. 19-22
- [71] Bruning A.M., Kasture D.G., Campbell F.J., Turner N.H., "Effect of cavity sub-corona current on polymer insulation life", IEEE Transactions on Electrical Insulation, Vol. 26, No. 4, 1991, pp. 826-836
- [72] Turner N.H., Campbell F.J., Bruning A.M., Kasture D.G., "Surface chemical changes of polymer cavities with currents above and below corona inception voltage", Annual Report of Conference on Electrical Insulation and Dielectric Phenomena (DEIDP), Victoria, B.C., Canada, October 1992, pp. 687-693
- [73] Brancato E., "Electrical aging - A new insight", IEEE Electrical Insulation Magazine, Vol. 6, 1990, pp. 50-51

- [74] Danikas M.G., Prionistis F.K., "Detection and recording of partial discharges below the so-called inception voltage", *Facta Universitatis*, Vol. 17, 2004, pp. 99-110
- [75] Danikas M.G., Vrakotsolis N., "Experimental results with small air gaps: Further thought and comments on the discharge (or charging phenomena) below the so-called inception voltage", *Journal of Electrical Engineering*, Vol. 56, No. 9, 2005, pp. 246-251
- [76] Danikas M.G., Pitsa D., "Detection and registration of discharge events below the so-called inception voltage: The case of small air gaps", *Journal of Electrical Engineering*, Vol. 59, No. 3, 2008, pp. 160-164
- [77] Danikas M.G., Zhao X., Cheng Y., "Experimental data on epoxy resin samples: Small partial discharges at inception voltage and some thoughts on the possibility of the existence of charging phenomena below inception voltage", *Journal of Electrical Engineering*, Vol. 62, No. 5, 2011, pp. 292-296
- [78] Zhang Y., Danikas M.G., Zhao X., Cheng Y., "Charging phenomena below the inception voltage: Effects of nano-fillers on epoxy", *Malaysian Polymer Journal*, Vol. 7, No. 2, 2012, pp. 68-73
- [79] Kozako M., Kido R., Fuse N., Ohki Y., Okamoto T., Tanaka T., "Difference in surface degradation due to partial discharges between polyamide nanocomposite and microcomposite", *Annual report of Conference on Electrical Insulation and Dielectric Phenomena*, 2004, pp. 398-401
- [80] Maecker H., "Ueber die Charakteristiken zylindrischer Boegen", *Zeitschrift fuer Physik*, Vol. 157, 1959, pp. 1-29
- [81] Bauder U.H., Maecker H.H., "The determination of transport properties from arc experiments: Methods and results", *Proceedings of the Institute of Electrical and Electronics Engineers (IEEE)*, Vol. 59, No. 4, 1971, pp. 588-592
- [82] Maecker H.H., "Effects of chemical reactions in arcs", *Pure and Applied Chemistry*, Vol. 62, No. 9, 1980, pp. 1675-1680
- [83] Maecker H.H., Stablein H.G., "What keeps an arc standing in a cross flow?", *IEEE Transactions on Plasma Science*, Vol. PS-14, No. 4, 1986, pp. 291-299
- [84] Zhang H., Cloud A., "Silicone based electrical insulation material for high speed/voltage rotating machi-

- nes", Proceedings of Coil Winding/Insulation & Electrical manufacturing Exhibition (CWIEME), May 24-26, 2011, Messe Berlin, Germany, www.arlon-std.com/, www.coilwindingexpo.com
- [85] Fort E.M., Pietsch H.E., "Aging of insulation by thermal and electrical stresses", Proceedings of Electrical /Electronics Insulation Conference, November 1975, p. 143, Publication number 75 CH1014-0-EF54
- [86] Brancato E.L., "Insulation aging: A historical and critical review" IEEE Transactions on Electrical Insulation, Vol.EI-13, No. 4, 1978, pp. 308-317
- [87] Dakin T.W., "High voltage insulation applications", IEEE Transactions on Electrical Insulation, Vol. EI-13, No. 4, 1978, pp. 318-326
- [88] Greenwood A., "A perspective on insulation systems in the electric power industry", IEEE Transactions on Electrical Insulation, Vol. 15, No. 3, 1980, pp. 134-138
- [89] Tanaka T., Imai T., "Advances in nanodielectric materials over the past 50 years", IEEE Electrical Insulation magazine, Vol. 29, No. 1, 2013, pp. 10-23

Previous Publication in FUNKTECHNIKPLUS # JOURNAL

"Parameters Affecting the Lifetime of Transformer Oil in Distribution Transformers: Parameter Monitoring of 50 Transformers from the Athens Area", Issue 4, Year 1, pp. 53-65

*** About The Authors**

Michael Danikas, Issue 2, Year 1, p. 39

Ramanujam Sarathi, Issue 2, Year 1, p. 39

Antenna Radiation Patterns: RadPat4W – FLOSS for MS Windows or Wine Linux

N.I. Yannopoulou, P.E. Zimourtopoulos *

Antennas Research Group, Austria – Hellas [1, 2]

Abstract

This paper briefly highlights the features of the software tool [RadPat4W], named after Radiation Patterns for Windows, that is based on an alternative exposition of fundamental Antenna Theory. This stand-alone application is compatible with the [Wine] environment of Linux and is part of a freeware suite, which is under active development for many years. Nevertheless, the [RadPat4W] source code has been now released as FLOSS Free Libre Open Source Software and thus it may be freely used, copied, modified or redistributed, individually or cooperatively, by the interested user to suit her/his personal needs for reliable antenna applications, from the simplest to the more complex.

Keywords

FLOSS, antenna, radiation pattern, Virtual Reality

Introduction

Useful software has to work exactly as someone wants, so the authors' group decided to develop its own mini-Suite of software tools for antenna applications [1]. This project started in the middle of 90s, when the PC with www access became power enough to cover the increased requirements of antenna analysis and design, as well as of their results presentation and distribution. Since then, the development of the mini-Suite has been orientated towards

the personal needs of the individual user or of the independent member of a small, open, loosely connected group, like the authors' one, who is interested in antenna education, research and engineering, i.e., a student, an educator, a researcher, a professional engineer or a radio amateur. Such a user has enough bibliographical resources provided by the Open Access movement, but only limited technical resources for construction and measurement. The mini-Suite is intended

then for the informed user who at least can construct an experimental thin-wire antenna model and at most has access to a VNA Vector Network Analyzer to test this model - by the way, nowadays, the cost of a certified refurbished VNA is just a small percentage of its new price. For that reason, the mini-Suite specifically includes the stand-alone application [RadPat4W].

[RadPat4W]

The active development of this tool attempts to bridge the increasing gap of today approximate simulation techniques, which dominate antenna applications, to classic exact analysis methods, which concern the demanding user who wants to know what s/he is really doing with these marvellous antenna simulators. To achieve this goal and facilitate the study of antenna application results, either approximated or exact, [RadPat4W] computes and/or plots the antenna geometry, its characteristics, as well as 2D main-plane cuts of its radiation pattern and 3D Virtual Reality objects for its geometry and pattern. Currently, the tool uses by default: (1) working formulas produced by the analysis method of the authors' alternative exposition of funda-

mental Antenna Theory [2] that is quickly but rigorously results in the most general complex vector expression for the radiation pattern of any thin-wire antenna, and (2) numerical results from approximation techniques based on the Moment Method implemented by the two antenna simulators [DA] and [RichWire], which are included in the mini-Suite [1]. Finally, to support the serious user to judge the results, the current beta version of [RadPat4W] incorporates the superposition on the plotted results of scientific VNA measurements with systematic errors first estimated by the authors in 2008 [3], a process that is now accomplished semi-manually using a combination of other separate mini-Suite tools.

Besides [RadPat4W], which was always distributed through the internet as free-ware, other non-commercial software, less related to [RadPat4W] and from developers with a diverse knowledge of Antenna Theory, is distributed under various terms of use. These were kinds of the free have been exhaustively examined by the members of the USENET group [alt.comp.freeware] with the purpose to warn the candidate user about the actual content of the corresponding licenses. How-

ever, to the best of authors' knowledge, it seems that there is still no completely FLOSS for reliable antenna applications. Therefore, with the aim to further encourage the independent user to tweak [RadPat4W] according to her/his personal needs or even to be involved in this modern, most promising, cooperative activity of the FLOSS movement, the authors decided lately to release the entire source code of [RadPat4W] under the approved, by the OSI Open Source Initiative, MIT License.

The source code, now in version 4.4 with help in version 1.0, is developed from scratch, without using any other code, in MS Visual Basic 6 SP6 for 32-bit MS Windows and the executable, which is also compatible with the [Wine] environment of Linux, needs about 8.5 MB of free hard disk space for its installation. The application usability has been multiple checked during antenna courses and theses elaboration, thus its source code is in a mature state for a long time now although, from time to time, new features are added to it. The code is available for download from authors' group website "<http://www.annas.gr/floss>" or GoogleCode repository at "<http://code.google.com/p/rga/>".

The features of [RadPat4W] can be divided according to their functionality in two groups: (1) pattern computation and plotting using working formulas from Antenna Theory, and (2) pattern plotting using numerical results from antenna simulators. To exemplify these features by examples, a number of antenna education, research and engineering applications, from the simplest to the more complex, are presented in the following.

Working Formulas

Fig. 1 shows the software application form of [RadPat4W] for the three main-plane cuts of the E-normalized radiation pattern of a linear, center-fed, standing-wave dipole, which is parallel to z-axis and has a length of 2.35λ , where the length is the only one input parameter with values in the range $[0.001, 10]\lambda$. To overcome the practical constraints of the limited number of screen pixels that obscures the detailed view of zero-E directions, which determine the radiation pattern lobes, a useful feature has been introduced in all application forms that is the magnification of the pattern up to six times. Each magnified diagram shows the zero-E directions by magenta colored radial li-

nes on the screen. The [Max-Zero-D] button opens the window of Fig. 2 in which the computed directions of maxima and zeros, as well as, the

directivity and the maximum value of pre-normalized E radiation pattern, are shown [2].

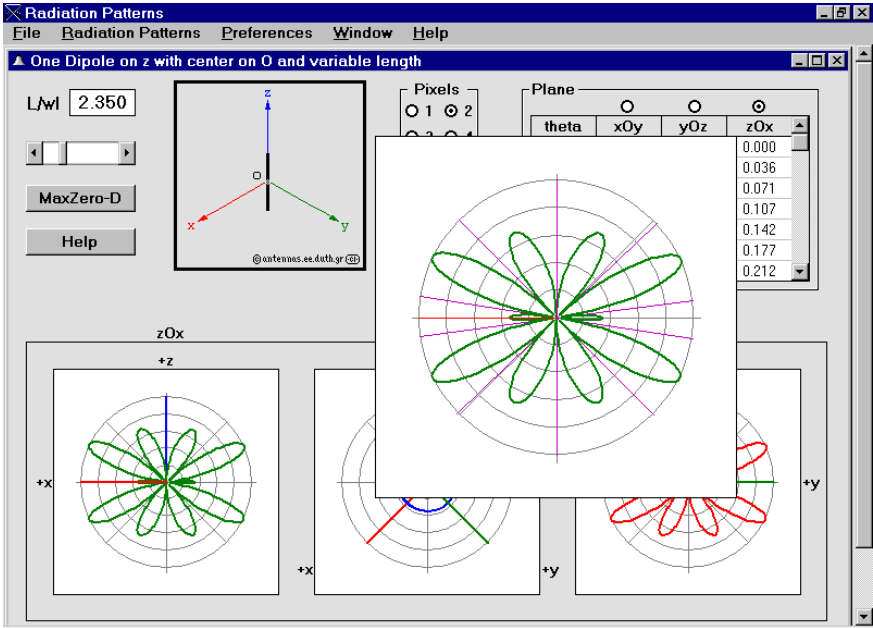


Fig. 1: [One Dipole on z]: A magnified main-plane cut

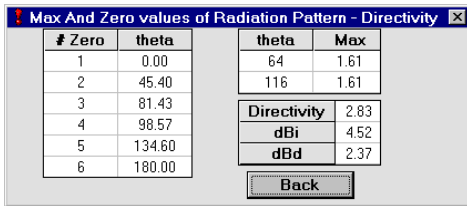


Fig. 2: [One Dipole on z]: Maximum, zeros and Directivity

Fig. 3 shows the three main-plane cuts of radiation pattern for the same dipole but in the space direction described by the input data of its unit directional vector: $(0.000, 0.707, -0.707)$. The [Zero] button opens the window of Fig. 4, where the computed directions of zeros on the three main-plane cuts, as well as on a plane that contains the dipole axis, are shown.

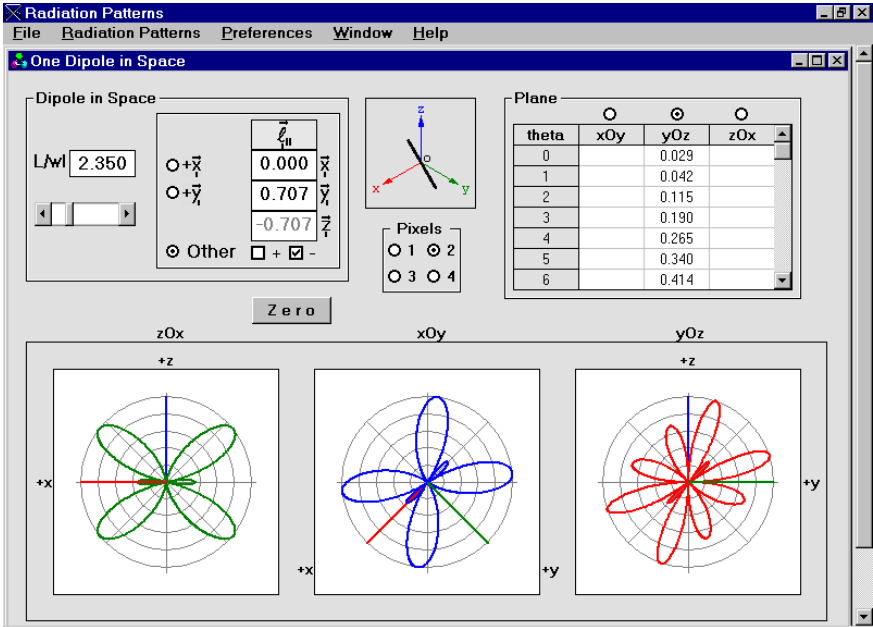


Fig. 3: [One Dipole in Space]: Three different main-plane cuts

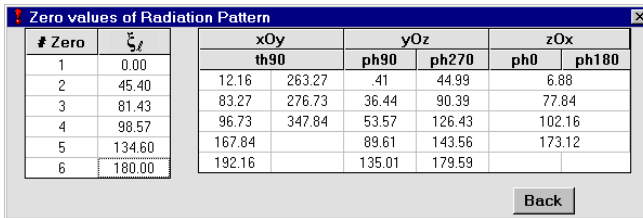


Fig. 4: [One Dipole in Space]: Zero pattern directions

Fig. 5 shows the input data for a uniform linear array of exactly parallel linear standing-wave dipoles, in two frames for the generator dipole with complex vector pattern G and the array of isotropic sources with complex number pattern A, respectively. The first frame

defines the length and the direction of the generator or reference dipole. The second frame defines the geometrical and electrical input data for the array: the number of isotropic point sources, their constant phase difference in degrees, their constant equidistance per wavelength, and

the unit directional vector of array axis. The shown values are for an array of 3 dipoles, 2λ each, in the direction of +y axis, with phase difference of -144° , 0.4λ apart, on the array axis direction of +x. The [Show Graphics] button opens the window of Fig. 6, in which the dipole array complex vector pattern $E = AG$, i.e., the Principle of Radiation Patterns Multiplication, is shown in absolute 3D form: the normalized norm pattern $||E||$ results as product of the normalized absolute pattern $|A|$ by the normalized norm pattern $||G||$ and by a non-shown constant spherical pattern $|A|_{\max} ||G||_{\max} / ||E||_{\max} \geq 1$ [2]. In the [Directivity] frame of the window, the directivities of the array D_A ,

of the generator D_G , and of the dipole array D are shown. The [Max-Zero of Array Factor] button opens the window of Fig. 7, in which the directions of zero-A and $|A|_{\max}$ and the values of $|A|_{\max}$, $||G||_{\max}$ and $||E||_{\max}$ are shown.

The buttons [A-3D], [G-3D] and [E-3D] produce the respective 3D Virtual Reality radiation patterns, which are shown in Fig. 8 as three screen captures of the free Platinum WorldView VRML viewer plug-in for MS Internet Explorer. By the way, the contemporary free VRML Cortona viewer is available for a number of other web browsers too, under MS Windows, while under Linux the most appropriate add-on for iceweasel (Mozilla Firefox) is the FreeWRL VRML viewer.

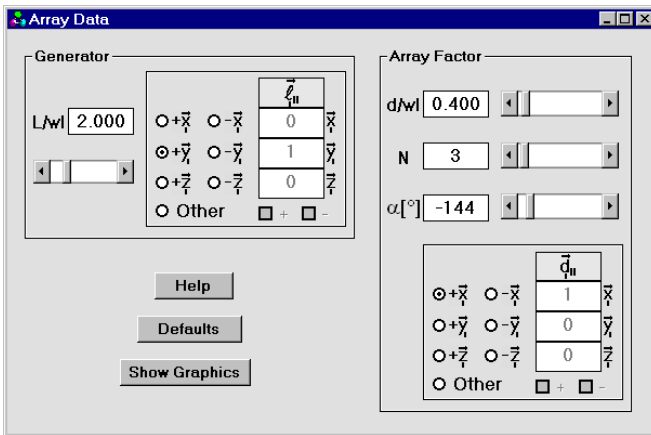


Fig. 5: [Array Data]: Uniform Linear Array input

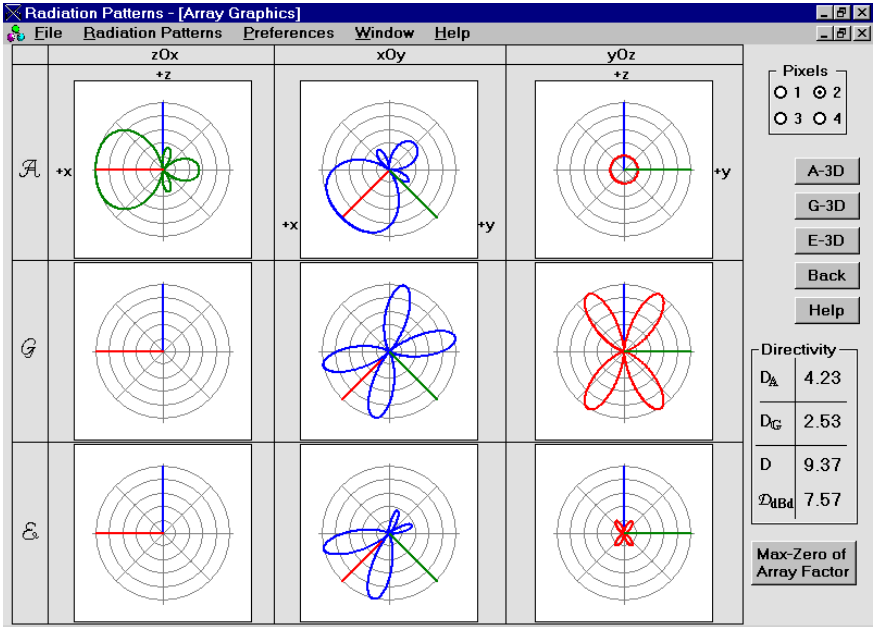


Fig. 6: [Array Graphics]: 9 main-plane pattern cuts, 2 zeros

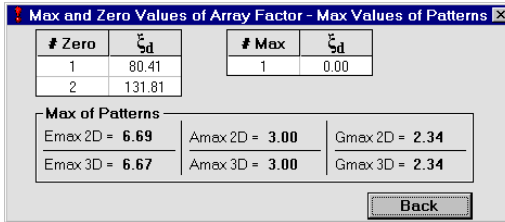


Fig. 7: [Max-Zero of Array Factor]: Computed results

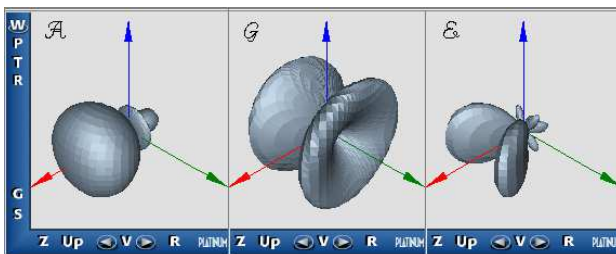


Fig. 8: Virtual 3D Principle of Radiation Pattern Multiplication

Antenna Simulators

The second group of [RadPat4W] features concerns its ability to plot antenna geometry and patterns from the clear text data files such those of the two antenna simulators of the mini-Suite: [DA] and [RichWire]. The source code of [DA], now in version 1.0.8, has been written in Compaq Visual Fortran 6.1 as Quick-Win 32-bit application for MS Windows, and the executable, which is also compatible with the [Wine] environment of Linux, can be easily installed on a PC with free hard disk space of only about ~500 KB.

In essence, this application is a restricted variation of [RichWire], which is a fully analyzed, corrected and redeveloped edition of the original Moment Method thin-wire computer program by J.H.Richmond, available in the public domain by NASA since 2005 [4]. [DA] is used for antenna simulation by half-wave dipoles, with just one active. The program requires an input data file to derive three output data files. All these data files are used by [RadPat4W]. In Fig. 9, the simplest data for only one dipole in space are shown. [RichWire] data files are similar. The usability of

both antenna simulators has been also multiple checked. The simulators are available as freeware from the mentioned repositories.

In Fig. 10, the [RadPat4W] engineering application for a commercial VHF Yagi-Uda antenna is shown. The [Antenna] button reads the antenna geometry [RichWire] data input file. The [geo.wrl] button produces the 3D Virtual Reality antenna geometry and simultaneously opens the [GL Viewer for Mathematica] for an immediate view [5]. In Fig. 11, the drawn results produced by [RadPat4W] are shown for an educational application of a flat airplane modeled with non-overlapping $\lambda/2$ dipoles in [DA] [6]. Fig. 12 illustrates the drawn results produced by the currently beta version of [RadPat4W] for a research application of a constructed Hentenna model, simulation designed with [RichWire] and measured with a VNA system [7].

[RadPat4W] Development Plans

Scheduled expansions of [RadPat4W] include the following facilities, which are already available in other mini-Suite tools: (1) choice of other plane- or conical-cuts, (2) key-in of any exact analysis working formula $E(\theta,$

φ), (3) selection of the ξ -, θ -, and φ - plotting step, (4) automation of fine Cartesian pattern plotting, (5) superposition of VNA measurements on 3D Virtual Reality patterns, such as that in the left part of Fig. 13 [8], and (6) superposition of VNA measurements with their differential error cloud [3] on 2D

plots, such that in the right part of Fig. 13 [9].

Any other expansion of the freely available code is of course welcomed. In authors' group, there are no plans in the near future to upgrade the mini-Suite to an integrated environment for its tools.

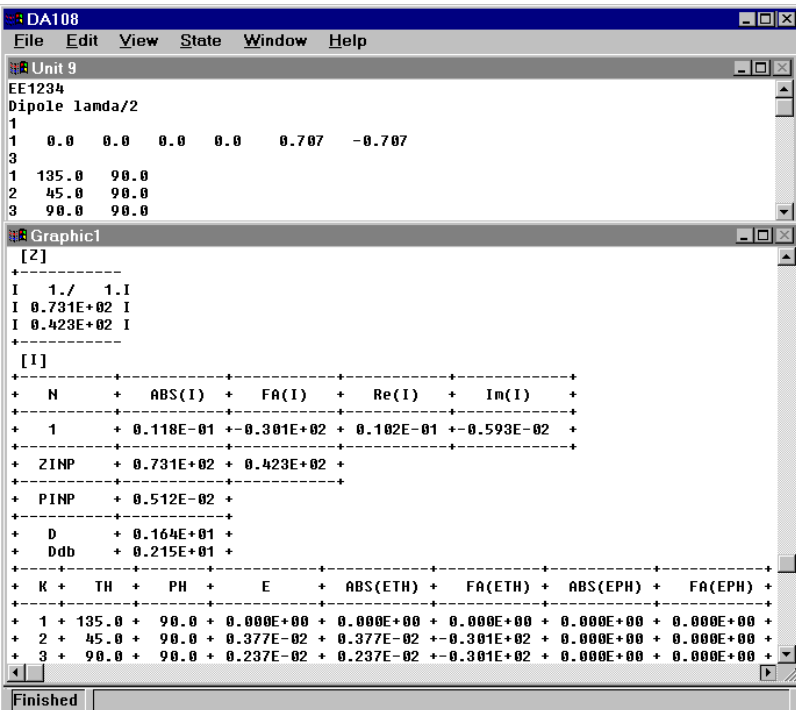


Fig. 9: [Da]: Input and output data for the simplest case

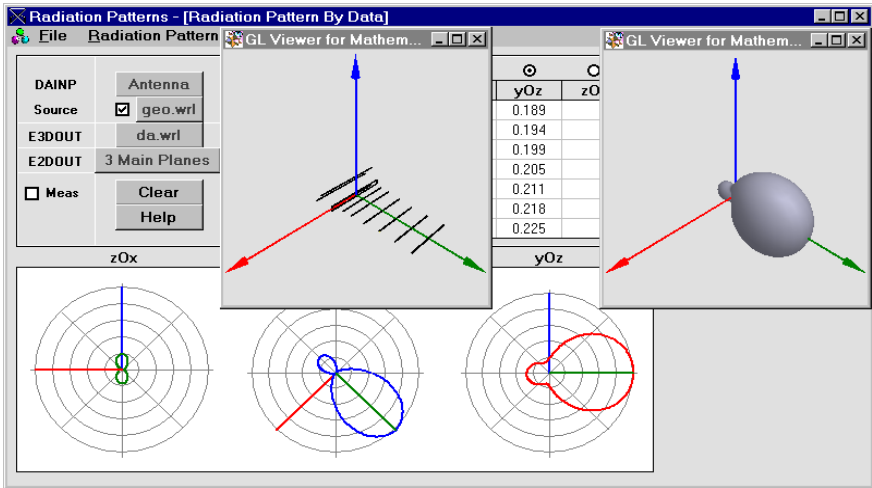


Fig. 10: [RichWire]: A commercial VHF Yagi-Uda antenna

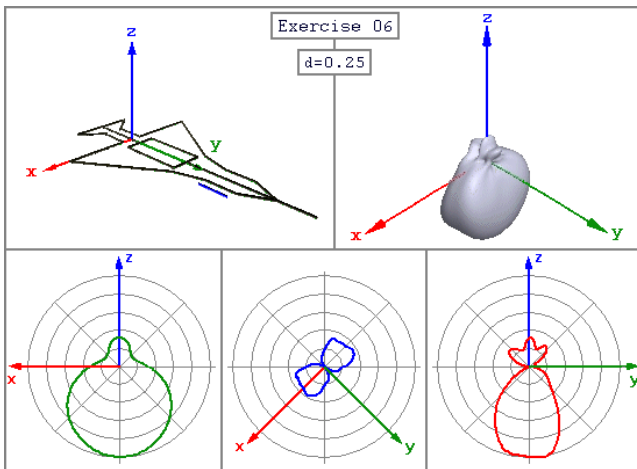


Fig. 11: [RadPat4W]: Results for a flat airplane model

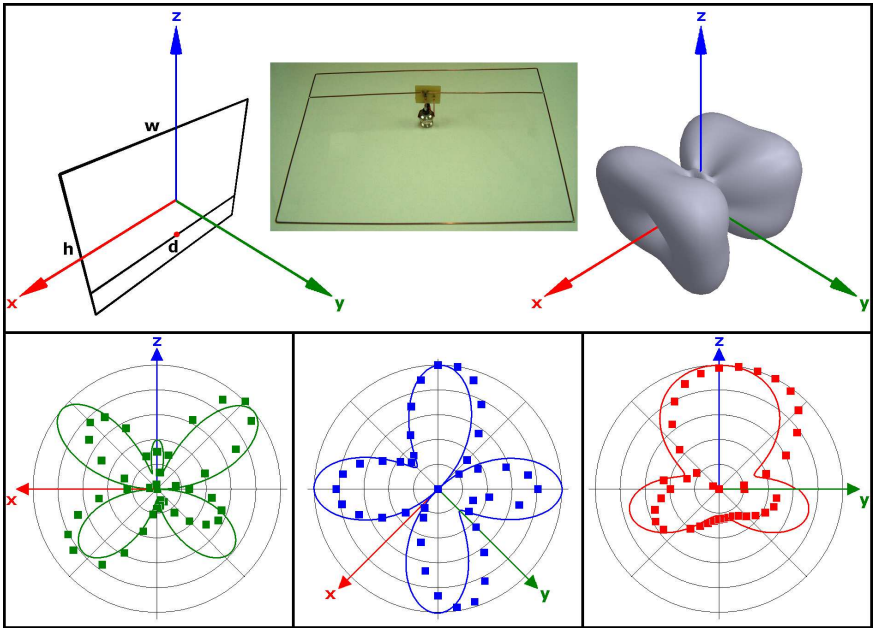


Fig. 12: [RadPat4W]: Design, Construction and Measurement

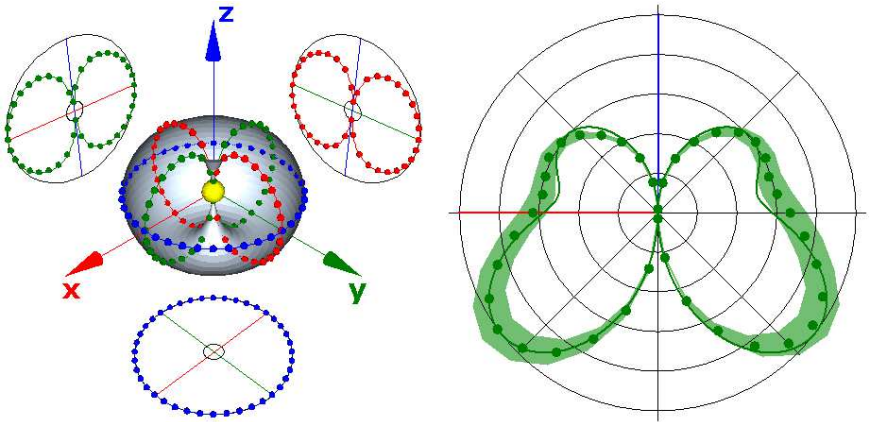


Fig. 13: 3D VNA measurements and their 2D error cloud

References *

- [1] Yannopoulou N., Zimourtopoulos P., "Mini Suite of Antenna Tools, Educational Laboratories, Antennas Research Group, 2006,
"www.antennas.gr/antsoft/minisuiteoftools/"
 - [2] Zimourtopoulos P., "Antenna Notes 1999-, Antenna Design Notes 2000-, "www.antennas.gr/antennanotes/" (in Greek)
 - [3] Yannopoulou N., Zimourtopoulos P., "S-Parameter Uncertainties in Network Analyzer Measurements with Application to Antenna Patterns", Radioengineering, Vol. 17, No. 1, April 2008, pp. 1-8
"www.radioeng.cz/fulltexts/2008/08_01_01_08.pdf"
 - [4] Richmond J.H., "Computer program for thin-wire structures in a homogeneous conducting medium", Publication Year: 1974, NTRS-Report/Patent Number: NASA-CR-2399, ESL-2902-12, DocumentID: 19740020595, "http://ntrs.nasa.gov/"
 - [5] Kuska J.-P., "MathGL3d: An Interactive OpenGL Based Viewer for Mathematica's 3D Graphics, Version 2.2,
"http://library.wolfram.com/infocenter/MathSource/2986/"
 - [6] Johnson R.C., "Antenna Engineering Handbook", 3rd Edition, McGraw-Hill, 1993, ch. 37, p. 11
 - [7] Babli E., "Hentenna", Diploma Thesis #31, ARG–Antennas Research Group, DUTH, 2004, ch. 6 (in Greek)
 - [8] Yannopoulou N., "Development of a broadband antenna for 3rd generation mobile telephony systems", MEng Thesis, ARG–Antennas Research Group, DUTH, 2003, ch. 6, p. 24 (in Greek)
 - [9] Yannopoulou N., "Study of monopole antennas over a multi-frequency decoupling cylinder", PhD Thesis, ARG–Antennas Research Group, DUTH, 2008, ch. 5 (in Greek)
- *Active Links: 04.08.2014 - Inactive Links : FTP#J Link Updates: "http://updates.ftpj.otoiser.org/"

Preprint Versions

"A FLOSS Tool for Antenna Radiation Patterns"

Nikolitsa Yannopoulou, Petros Zimourtopoulos
"http://arxiv.org/abs/1002.3072"

Proceedings of 15th Conference on Microwave Techniques,
COMITE 2010, Brno, Czech Republic, pp. 59-62

Follow-Up Research Paper

Not until now

Previous Publication in FUNKTECHNIKPLUS # JOURNAL

"Self-Standing End-Fed Geometrically Uniform Linear Arrays:
Analysis, Design, Construction, Measurements and FLOSS",
Issue 4, Year 1, pp.43-52

* About The Authors

Nikolitsa Yannopoulou, Issue 1, Year 1, p. 15

Petros Zimourtopoulos, Issue 1, Year 1, p. 15

[This Page Intentionally Left Blank]

[This Page Intentionally Left Blank]

In case of any doubt,
download the genuine papers from
genuine.ftpj.otoiser.org

FRONT COVER VIGNETTE

A faded synthesis of an anthemion rooted in a meandros

The thirteen-leaf is a symbol for a life tree leaf.
"Herakles and Kerberos", ca. 530–500 BC,
by Paseas, the Kerberos Painter,
Museum of Fine Arts, Boston.

www.mfa.org/collections/object/plate-153852

The simple meandros is a symbol for eternal immortality.
"Warrior with a phiale", ca. 480–460 BC,
by Berliner Maler,
Museo Archeologico Regionale "Antonio Salinas" di Palermo.

commons.wikimedia.org/wiki/File:Warrior_MAR_Palermo_NI2134.jpg